

FROM LEFT  
L01-51  
Gardenia,  
L01-18  
Dark Brown



**sizes**

XS - 5XL, 7XL

**product features**

**L01** Unisex | Split Bottom | Breathable | Honeycomb Structure  
Tear Away Label | Pre Shrunk

# HONEYCOMB classic polo 210gsm

SIZE (INCH)	XS	S	M	L	XL	XXL	3XL	4XL	5XL	7XL
<b>Chest</b>	36"	38"	40"	42"	44"	46"	48"	50"	52"	56"
<b>Length</b>	26"	27"	28"	39"	30"	31"	32"	33"	35"	36"
<b>Shoulder</b>	16"	17"	18"	19"	20"	21"	22"	23"	24"	26"
<b>Sleeve</b>	7.0"	7.5"	8.0"	8.5"	9.0"	9.5"	10.0"	10.5"	11.0"	12.0"

\*Measurement tolerance of ±0.5 inch from the actual product.

Available in 27 colours

60% Cotton | 40% Polyester | 210gsm



LF01-02  
Navy

# HONEYCOMB POLO *classic polo* 210gsm female

60% Cotton | 40% Polyester | 210gsm

**sizes**  
XS - L

**product features**

Unisex | Split Bottom | Breathable | Honeycomb Structure  
Tear Away Label | Pre Shrunk

SIZE (INCH)	XS	S	M	L
<b>Chest</b>	34"	36"	38"	40"
<b>Length</b>	23.5"	24.5"	25.5"	26.5"
<b>Shoulder</b>	14"	15"	16"	17"
<b>Sleeve</b>	6.0"	6.5"	7.0"	7.25"

\*Measurement tolerance of ±0.5 inch from the actual product.

LF01

Available in 5 colours



LF01-00  
White



LF01-03  
Red



LF01-07  
Royal Blue



LF01-02  
Navy



LF01-01  
Black



FROM LEFT  
L02-09  
Melange,  
L02-34  
Dark Melange



## L02

# HONEYCOMB CLASSIC POLO

## long-sleeved

### 210gsm

60% Cotton | 40% Polyester | 210gsm

**sizes**  
XS - 3XL

**product features**  
Unisex | Split Bottom | Breathable | Honeycomb Structure  
Tear Away Label | Pre Shrunk

SIZE (INCH)	XS	S	M	L	XL	XXL	3XL
<b>Chest</b>	36"	38"	40"	42"	44"	46"	48"
<b>Length</b>	25"	26"	27"	28"	29"	30"	31"
<b>Shoulder</b>	15"	16"	17"	18"	20"	21"	22"
<b>Sleeve</b>	23.0"	23.5"	24.0"	24.5"	25.0"	25.5"	26.0"

\*Measurement tolerance of ±0.5 inch from the actual product.

### Available in 7 colours



Available in 6 colours



FC01-00  
White



FC01-10  
Yellow



FC01-03  
Red



FC01-07  
Royal Blue



FC01-02  
Navy



FC01-01  
Black

100% Cotton | 180gsm

**sizes**

XS - 3XL

**product features**

Unisex | Oeko-Tex | Pre Shrunk  
Tear Away Label | Enzyme Wash  
Carcinogenic Free | Azo Dye Free  
Hypoallergenic | Skin Friendly

# FC01

# 100% FULLYCOMB cotton polo

SIZE (INCH)	XS	S	M	L	XL	XXL	3XL
<b>Chest</b>	36"	38"	40"	42"	44"	46"	48"
<b>Length</b>	25"	26"	27"	28"	29"	30"	31"
<b>Shoulder</b>	15"	16"	17"	18"	20"	21"	22"
<b>Sleeve</b>	8.0"	8.0"	8.5"	9.0"	9.5"	10.0"	10.5"

\*Measurement tolerance of ±0.5 inch from the actual product.



# HYBRID MICROFIBER COTTON



FROM LEFT  
MH01-02  
Navy for both male  
and female models

## REVOLUTIONARY *innovation*

Experience a revolution in comfort and style with our exclusive innovative LuxBlend Hybrid Microfiber Cotton, a meticulously crafted smart combination of microfiber pique's elegant high shine glossy silky smooth external surface and the luxuriously comfortable skin-friendly texture from 100% cotton's on the inside. Elevate your wardrobe with a fabric that truly understands your needs, keeping you comfortable and stylish in every moment.

Available in 8 colours



### MH01

## LUXEBLEND HYBRID *polo*

Outer Layer: 100% Microfiber | Inner Layer: 100% Cotton | 215gsm

**sizes**  
XS - 3XL

**product features**  
Unisex | Uniform Collarred | Split Bottom  
Tear Away Label | Microcotton  
Dual Layers — Outer layer: Microfiber; Inner layer: Cotton

SIZE (INCH)	XS	S	M	L	XL	XXL	3XL
<b>Chest</b>	36"	38"	40"	42"	44"	46"	48"
<b>Length</b>	24.0"	24.5"	25.5"	26.5"	27.5"	28.5"	29.5"
<b>Shoulder</b>	16.0"	17.0"	17.5"	18.0"	18.5"	19.0"	19.5"
<b>Sleeve</b>	7.0"	7.5"	8.0"	8.5"	9.0"	9.5"	10.0"

\*Measurement tolerance of ±0.5 inch from the actual product.

# L03

## HONEYCOMB GRAND POLO cotton lycra

98% Cotton | 2% Lycra | 220GSM

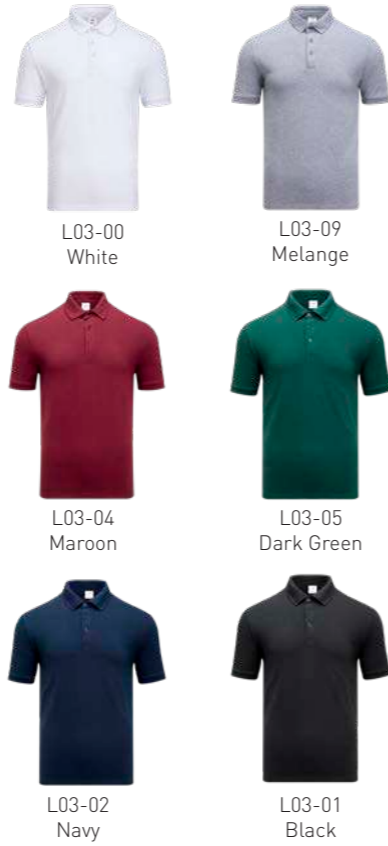
**sizes**  
XS - 3XL

**product features**  
Unisex | Split Bottom | Breathable | Uniform Collar Neck  
Honeycomb Structure | Tear Away Label | Pre Shrunk

SIZE (INCH)	XS	S	M	L	XL	XXL	3XL
<b>Chest</b>	36"	38"	40"	42"	44"	46"	48"
<b>Length</b>	24.0"	24.5"	25.5"	26.5"	27.5"	28.5"	29.5"
<b>Shoulder</b>	16.0"	17.0"	17.5"	18.0"	18.5"	19.0"	19.5"
<b>Sleeve</b>	7.0"	7.5"	8.0"	8.5"	9.0"	9.5"	10.0"

\*Measurement tolerance of ±0.5 inch from the actual product.

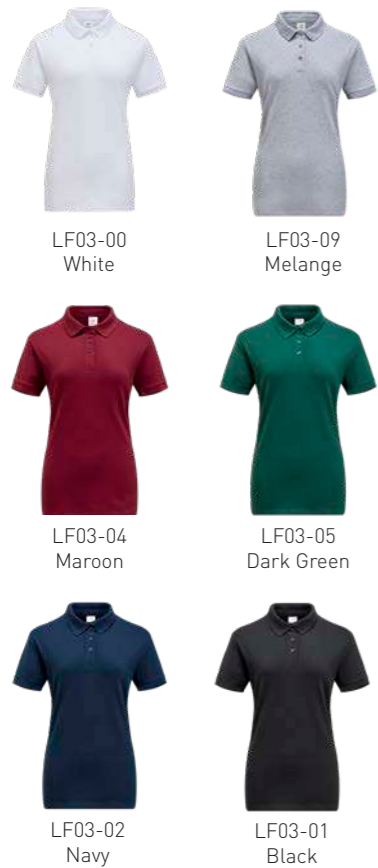
Available in 6 colours



FROM LEFT  
L03-00  
White  
LF03-00  
White



Available in 6 colours



98% Cotton | 2% Lycra | 220gsm

**sizes**  
S - XL

**product features**  
Female only | Split Bottom | Breathable  
Uniform Collar Neck | Honeycomb Structure  
Tear Away Label | Pre Shrunk

# LF03

## HONEYCOMB GRAND POLO cotton lycra female

SIZE (INCH)	S	M	L	XL
<b>Chest</b>	36"	38"	40"	42"
<b>Length</b>	24.0"	24.5"	25.0"	25.5"
<b>Shoulder</b>	15.0"	16.0"	16.5"	17.5"
<b>Sleeve</b>	6.0"	6.5"	9.0"	7.5"

\*Measurement tolerance of ±0.5 inch from the actual product.

FROM LEFT  
L21-01  
Black/Royal Blue  
L21-03  
Red/Maroon



# HONEYCOMB *polo*

60% Cotton | 40% Polyester | 210gsm

**sizes**

XS - 3XL

**product features**

Unisex | Split Bottom | Breathable  
Honeycomb Structure | Pre Shrunk

L2100

SIZE (INCH)	XS	S	M	L	XL	XXL	3XL
<b>Chest</b>	36"	38"	40"	42"	44"	46"	48"
<b>Length</b>	25"	26"	27"	28"	29"	30"	31"
<b>Shoulder</b>	15"	16"	17"	18"	20"	21"	22"
<b>Sleeve</b>	8.0"	8.0"	8.5"	9.0"	9.5"	10.0"	10.5"

\*Measurement tolerance of ±0.5 inch from the actual product.

Available in 8 colours



L21-03  
Red/Maroon



L21-20  
Milo Green/Yellow



L21-05  
Dark Green/  
Golden Yellow



L21-21  
Purple/Pink



L21-14  
Light Blue/Navy



L21-02  
Navy/Red



L21-01  
Black/Royal Blue



L21-07  
Royal Blue/Light Blue



Side



Back



FROM LEFT  
L20-34  
Dark Melange/Light Blue,  
L20-02  
Navy/Mustard

# L2000

## HONEYCOMB polo

60% Cotton | 40% Polyester | 210gsm

**sizes**  
XS - 3XL

**product features**  
Unisex | Split Bottom | Breathable  
Honeycomb Structure | Pre Shrunk

SIZE (INCH)	XS	S	M	L	XL	XXL	3XL
<b>Chest</b>	36"	38"	40"	42"	44"	46"	48"
<b>Length</b>	25"	26"	27"	28"	29"	30"	31"
<b>Shoulder</b>	15"	16"	17"	18"	20"	21"	22"
<b>Sleeve</b>	8.0"	8.0"	8.5"	9.0"	9.5"	10.0"	10.5"

\*Measurement tolerance of ±0.5 inch from the actual product.

Available in 4 colours



60% Cotton | 40% Polyester | 210gsm

**sizes**  
XS - 3XL

**product features**  
Unisex | Split Bottom | Breathable  
Honeycomb Structure | Pre Shrunk

# L1900

## HONEYCOMB polo

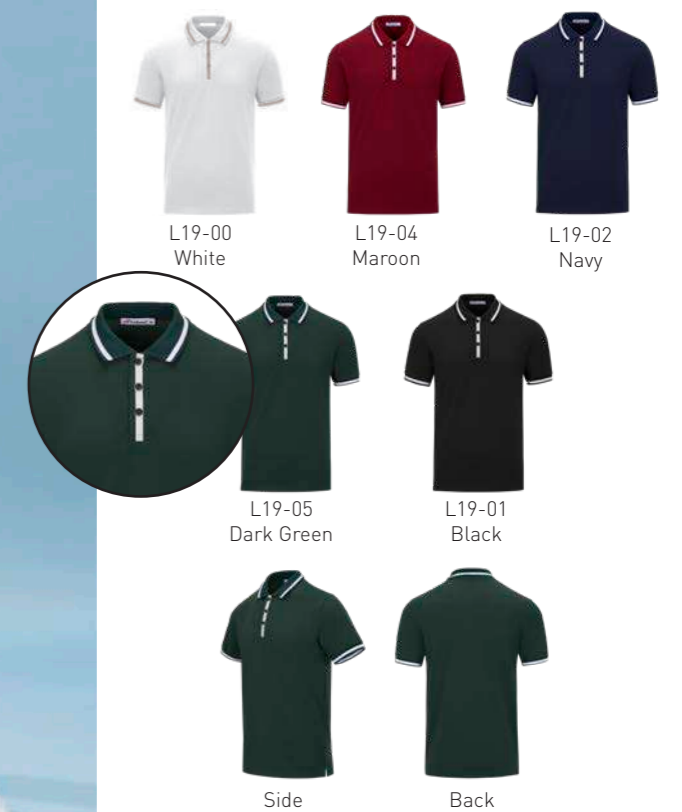
FROM LEFT  
L19-00  
White,  
L19-05  
Dark Green

SIZE (INCH)	XS	S	M	L	XL	XXL	3XL
<b>Chest</b>	36"	38"	40"	42"	44"	46"	48"
<b>Length</b>	25"	26"	27"	28"	29"	30"	31"
<b>Shoulder</b>	15"	16"	17"	18"	20"	21"	22"
<b>Sleeve</b>	8.0"	8.0"	8.5"	9.0"	9.5"	10.0"	10.5"

\*Measurement tolerance of ±0.5 inch from the actual product.



Available in 5 colours



FROM LEFT  
L18-02  
Navy,  
L18-04  
Maroon



## L1800

# HONEYCOMB *polo*

60% Cotton | 40% Polyester | 210gsm

**sizes**

XS - 3XL

**product features**

Unisex | Split Bottom | Breathable  
Honeycomb Structure | Pre Shrunk

SIZE (INCH)	XS	S	M	L	XL	XXL	3XL
<b>Chest</b>	36"	38"	40"	42"	44"	46"	48"
<b>Length</b>	25"	26"	27"	28"	29"	30"	31"
<b>Shoulder</b>	15"	16"	17"	18"	20"	21"	22"
<b>Sleeve</b>	8.0"	8.0"	8.5"	9.0"	9.5"	10.0"	10.5"

\*Measurement tolerance of ±0.5 inch from the actual product.

Available in 4 colours



L18-00  
White



L18-04  
Maroon



L18-01  
Black



L18-02  
Navy



Side



Back

# L1700

## HONEYCOMB *polo*

60% Cotton | 40% Polyester | 210gsm

**sizes**

XS - 3XL

**product features**

Unisex | Split Bottom | Breathable  
Honeycomb Structure | Pre Shrunk

SIZE (INCH)	XS	S	M	L	XL	XXL	3XL
<b>Chest</b>	36"	38"	40"	42"	44"	46"	48"
<b>Length</b>	25"	26"	27"	28"	29"	30"	31"
<b>Shoulder</b>	15"	16"	17"	18"	20"	21"	22"
<b>Sleeve</b>	8.0"	8.0"	8.5"	9.0"	9.5"	10.0"	10.5"

\*Measurement tolerance of ±0.5 inch from the actual product.



L17-00  
White

Back

Available in 3 colours



L17-34  
Dark Melange



L17-01  
Black

FROM LEFT  
L17-34  
Dark Melange,  
L17-00  
White





FROM LEFT  
L16-01  
Black/Dark Melange  
for both male and  
female models

60% Cotton | 40% Polyester | 210gsm

**sizes**  
XS - 3XL

**product features**  
Unisex | Split Bottom  
Breathable | Honeycomb Structure  
Pre Shrunk

## L1600

# HONEYCOMB polo

Available in 3 colours



L16-01  
Black/Dark Melange



L16-02  
Navy/Royal Blue



L16-03  
Red/White



Back

SIZE (INCH)	XS	S	M	L	XL	XXL	3XL
<b>Chest</b>	36"	38"	40"	42"	44"	46"	48"
<b>Length</b>	25"	26"	27"	28"	29"	30"	31"
<b>Shoulder</b>	15"	16"	17"	18"	20"	21"	22"
<b>Sleeve</b>	8.0"	8.0"	8.5"	9.0"	9.5"	10.0"	10.5"

\*Measurement tolerance of ±0.5 inch from the actual product.



FROM LEFT  
L15-02 Navy/White  
L15-04 Maroon/White

Available in 3 colours



L15-00  
White/Dark Melange



L15-04  
Maroon/White



L15-02  
Navy/White



Back



## L1500

# HONEYCOMB polo

60% Cotton | 40% Polyester | 210gsm

**sizes**  
XS - 3XL

**product features**  
Unisex | Split Bottom | Breathable  
Honeycomb Structure | Pre Shrunk

SIZE (INCH)	XS	S	M	L	XL	XXL	3XL
<b>Chest</b>	36"	38"	40"	42"	44"	46"	48"
<b>Length</b>	25"	26"	27"	28"	29"	30"	31"
<b>Shoulder</b>	15"	16"	17"	18"	20"	21"	22"
<b>Sleeve</b>	8.0"	8.0"	8.5"	9.0"	9.5"	10.0"	10.5"

\*Measurement tolerance of ±0.5 inch from the actual product.

FROM LEFT  
L14-02  
Navy/Royal Blue/White,  
L14-00  
White/Sea Blue/Grey



60% Cotton | 40% Polyester | 210gsm

**sizes**

XS - 3XL

**product features**

Unisex | Split Bottom | Breathable  
Honeycomb Structure | Pre Shrunk

L1400

**HONEYCOMB**  
*polo*

SIZE (INCH)	XS	S	M	L	XL	XXL	3XL
<b>Chest</b>	36"	38"	40"	42"	44"	46"	48"
<b>Length</b>	25"	26"	27"	28"	29"	30"	31"
<b>Shoulder</b>	15"	16"	17"	18"	20"	21"	22"
<b>Sleeve</b>	8.0"	8.0"	8.5"	9.0"	9.5"	10.0"	10.5"

\*Measurement tolerance of ±0.5 inch from the actual product.

Available in 5 colours



L14-00  
White/Sea Blue/Grey



Back



L14-03  
Red/White/Black



L14-35  
Dark Melange/  
Red/White



L14-02  
Navy/Royal Blue/  
White



L14-01  
Black/Orange/  
White

L1300

# HONEYCOMB polo

60% Cotton | 40% Polyester | 210gsm

**sizes**  
XS - 3XL

**product features**  
Unisex | Split Bottom | Breathable  
Honeycomb Structure | Pre-Shrunk

SIZE (INCH)	XS	S	M	L	XL	XXL	3XL
<b>Chest</b>	36"	38"	40"	42"	44"	46"	48"
<b>Length</b>	25"	26"	27"	28"	29"	30"	31"
<b>Shoulder</b>	15"	16"	17"	18"	20"	21"	22"
<b>Sleeve</b>	8.0"	8.0"	8.5"	9.0"	9.5"	10.0"	10.5"

\*Measurement tolerance of ±0.5 inch from the actual product.



FROM LEFT  
L13-21  
Purple/Yellow/Orange  
L13-11  
Apple Green/White/Royal Blue

Available in 7 colours



L13-00 Navy/ White/ Red  
L13-06 Orange/White/ Royal Blue  
L13-03 Royal Blue/ White/Red  
L13-01 Black/White/Grey  
L13-07 Royal Blue/White/ Red  
L13-21 Purple/White/ Orange  
L13-11 Apple Green/ White/Royal Blue  
Back

L1200

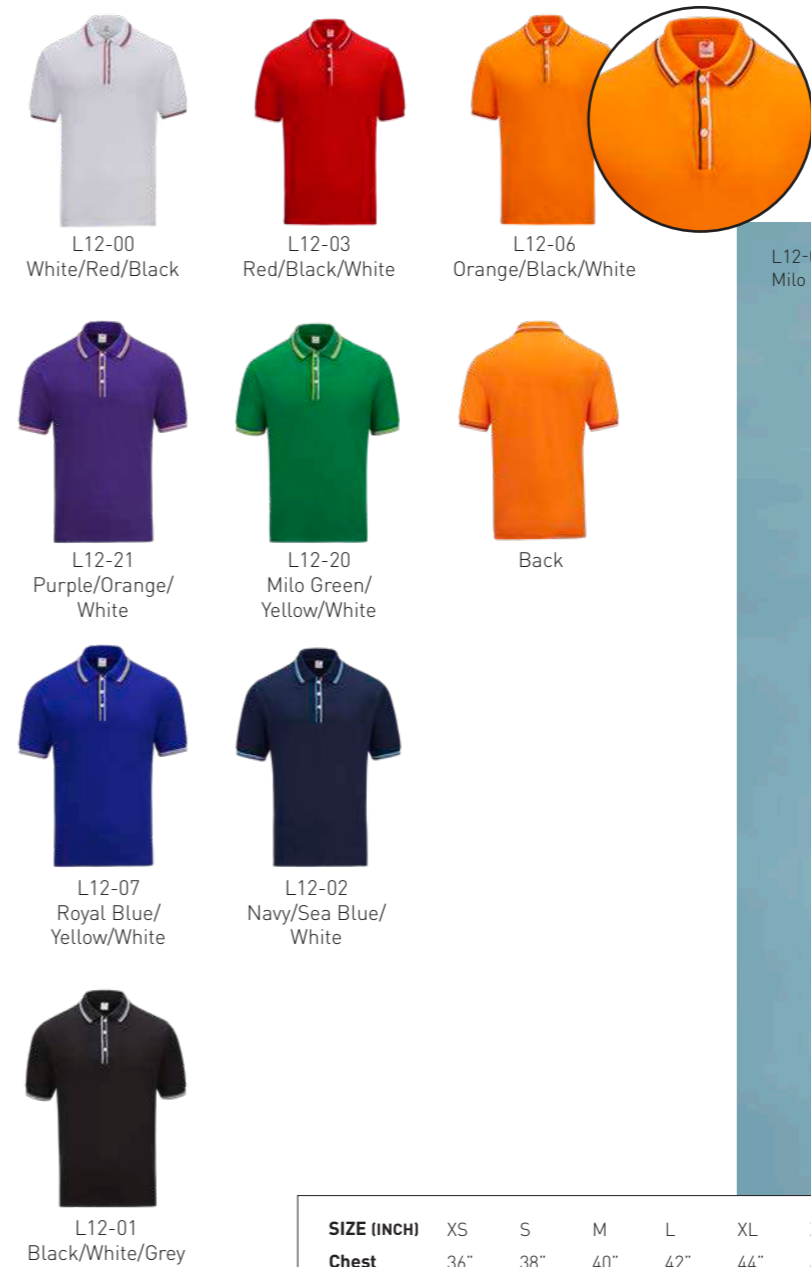
60% Cotton | 40% Polyester | 210gsm

**sizes**  
XS - 3XL

# HONEYCOMB polo

**product features**  
Unisex | Split Bottom | Breathable  
Honeycomb Structure | Pre Shrunk

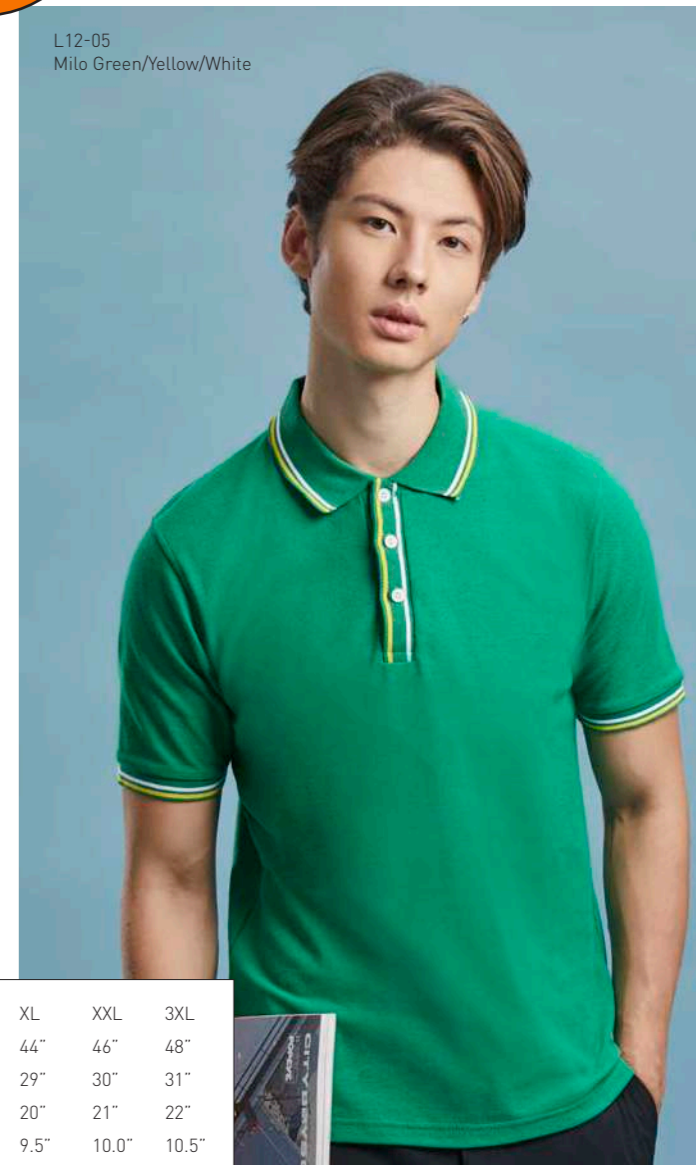
Available in 8 colours



L12-00 White/Red/Black  
L12-03 Red/Black/White  
L12-06 Orange/Black/White  
L12-05 Milo Green/Yellow/White  
L12-21 Purple/Orange/ White  
L12-20 Milo Green/ Yellow/White  
Back  
L12-07 Royal Blue/ Yellow/White  
L12-02 Navy/Sea Blue/ White  
L12-01 Black/White/Grey

SIZE (INCH)	XS	S	M	L	XL	XXL	3XL
<b>Chest</b>	36"	38"	40"	42"	44"	46"	48"
<b>Length</b>	25"	26"	27"	28"	29"	30"	31"
<b>Shoulder</b>	15"	16"	17"	18"	20"	21"	22"
<b>Sleeve</b>	8.0"	8.0"	8.5"	9.0"	9.5"	10.0"	10.5"

\*Measurement tolerance of ±0.5 inch from the actual product.



FROM LEFT  
L11-01  
Black/Dark Grey for  
both male and  
female models

# L1100

## HONEYCOMB polo

60% Cotton | 40% Polyester | 210gsm

**sizes**

XS - 3XL

**product features**

Unisex | Breathable  
Honeycomb Structure | Pre Shrunk

SIZE (INCH)	XS	S	M	L	XL	XXL	3XL
<b>Chest</b>	36"	38"	40"	42"	44"	46"	48"
<b>Length</b>	25"	26"	27"	28"	29"	30"	31"
<b>Shoulder</b>	15"	16"	17"	18"	20"	21"	22"
<b>Sleeve</b>	8.0"	8.0"	8.5"	9.0"	9.5"	10.0"	10.5"

\*Measurement tolerance of ±0.5 inch from the actual product.

Available in 5 colours



L11-03  
Red/Black



L11-07  
Royal Blue/Black



L11-21  
Purple/Black



L11-01  
Black/Dark Grey



L11-02  
Navy/Red



Side



Back



# Introducing LifeFuture™ cotton

Sedex

intertek  
Total Quality. Assured.

First class quality for superior comfort

When it comes to offering the finest in cotton products, our commitment to quality sets us apart. Unlike carded cotton, a material that is widely used and common in the market, our LifeFuture™ Cotton uses 100% premium combed cotton that is exceptionally astounding. This marks a new level of comfort, durability and modern luxury with our meticulous creations of LifeFuture™.

## 1. Unparalleled Uniformity and Softness

What makes it stand out from the typical carded cotton is that our LifeFuture™ Cotton has perfect alignment between the fibers, creating a consistent and straight yarn that achieves superior uniformity. This intricate process produces an even and remarkably smooth texture. Your skin will indulge in the luxurious softness when touching the fabric.

## 2. Radiant Luster and Luminosity

Our commitment to excellence shines through in every thread. The process of combing removes short staple fibers and enhances the yarn's ability to reflect light, making it appear glossy and shiny. Get ready to be captivated with this shimmering quality of our LifeFuture™ Cotton pieces.

## 3. Better Durability and Longer Lasting

The combing process of our LifeFuture™ Cotton eliminates the unwanted short fibers, making it a robust longer lasting and highly durable fabric. It's time for you to cherish your beloved pieces that will remain at its top condition for a longer time.



## 4. Less Pilling for Better Appearance

Bid farewell to the woes of pilling and fuzziness. Our LifeFuture™ Cotton ensures that impurities and short fibers are removed in the process, significantly reducing the likelihood of loose threads and pilling on the fabric's surface. This guarantees an instant elevation for the overall product appearance.

## 5. Great Breathability for All-Day Comfort

The uniform alignment of the fibers in our LifeFuture™ Cotton promotes enhanced airflow, elevating moisture absorption and delivering a cooling effect that gives you all day comfort.

## 6. Resilient Against Shrinkage

Our LifeFuture™ Cotton is more stable than ever, thanks to its sturdy structure as a result of removal of impurities and smart alignment of fibers, the shrinkage caused by washing has been significantly mitigated compared to carded cotton. Now your favorite cotton pieces will shrink no more.



## 7. Hypoallergenic Luxury

Your wellbeing is our top priority. With the hypoallergenic properties of our LifeFuture™ Cotton, the fabric has the ability to remove potential allergens such as dusts and pollen, giving you a fabric surface that is gentle on the skin and unlikely to trigger allergies. Goodbye irritation, hello superior comfort!

## 8. Anti Carcinogenic Property

Our LifeFuture™ Cotton uses premium combed cotton that is free of carcinogenic agents including Azo Dye, undergoing rigorous testing and conforms to the highest safety standards and has also been certified by Intertek and SGS. We care about you and it makes perfect sense for us to put your well-being as our top priority.

This is our LifeFuture™ Cotton. Immerse yourself in a new world of luxuriously understated fabric that offers you nothing but the best quality, enduring styles and highest functionality.

